



# The Buzz From The Bee

July & August 2009

CLASSES & CALENDAR

## **Technique Workshops**

### ***Orientation - Cost \$5 (Required for all beginners)***

Instructor: Varies

This is a necessary pre-requisite for any of our beginner classes. If you have never taken a class and are new to the quilting world or you just need to brush up on your cutting skills this is the class for you. Learn all about the rotary cutter, mat and ruler. Practice before your class starts so your comfortable cutting fabric. Also enjoy 30% off any rotary cutter, mat and long ruler (new students only).

## **Quilting Classes**

### ***Learn to Quilt Series: From Beginning to End - Cost \$47 + supplies***

A detailed step by step series of classes that covers all you need to know to make a sweet baby quilt or throw. We'll begin by showing you the proper way to use your rotary cutter, ruler and mat to accurately cut out your quilt. We will then finish the series with binding the quilt and hand tying it.

Excellent class for the beginner sewer and novice quilter.

Instructor: Nancy Peterson

## **Super Quick (& cool) Pillowcase**

### ***2 Hour Class - Cost \$12 + material***

A fun class to take with a friend. Learn how easy it is to make a finished pillowcase with all finished inside seams. You'll find this is your new addiction. Makes a wonderful gift especially for the person who has everything and needs nothing. Everyone needs and appreciates a custom made pillowcase

Instructor: Nancy Peterson

## **Open Sew**

### ***Every Monday Evening from 5:30 — 8:30pm with Becky Flees - Cost is just \$6***

Love the camaraderie of sewing with a group or you just need a little help with a project. Then join us on Monday nights! Give us a call to sign up, so we know to expect you!

## **Bee Creative - Cost \$5**

These monthly lecture/demo classes are designed to introduce you to a great time along with labor saving patterns, techniques, notions & tons of inspiration. Bring in show and tell and get a 15% off coupon for one item that day. To make this a truly enjoyable time we offer 15% off each of the products demonstrated that day! Space is limited to 20 per session, so sign up early, sessions fill up fast!

Our most popular event!

- Meets the 4th Thursday of each month, choose a time:

10 am - 11:30, 12:30 - 2, 3 - 4:30 or 6 - 7:30pm.

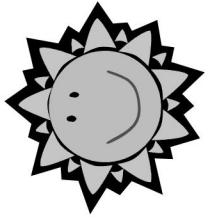
## **New Monthly Club at the Bee:**

Scrap Quilt Club - \$55 for this 6 month club: Orientation Begins August 24th

- Meets the 1st or 3rd Monday of Each Month - Choose 3 - 5pm or 6 - 8pm

Bring your own scrap stash and make a tote, a quilt or two, a runner and a wall hanging. Learn how to cut, store and use all of those leftover scraps. Expert instructor Ruth will offer great patterns and tools to bust that stash!

Instructor: Ruth Lamper

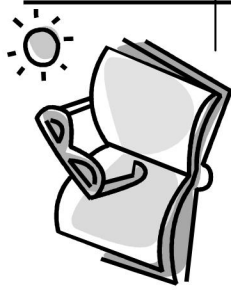


# JULY 2009

## Want to take a class?

Just grab 2 of your friends and we can schedule any class you'd like. Cost is just \$6 per class hour. Need a private lesson? Cost is just \$15 per hour.

Sun	Mon	Tue	Wed	Thu	Fri	Sat
		1	2	3	4	<i>4th of July</i> Open 10 - 2
5	6	7	8	9 Appliqué Club 10:30 - 12:30	10 Block of the Month 2 or 4pm	11 Block of the Month @ 9:30am
83rd Annual "National Cherry Festival" All Week July 4th — 11th, 2009!						
	Open Sew					
12	13 Kids Club 10-12 Orientation 1 - 3	14 Learn to Quilt 10 - 12 (1 of 4)	15 Kids Club 10-12	16	17 Kids Club 10-12	18
	Open Sew					
19	20 Kids Club 10 - 12 Thimbleberries Club 1 - 3pm Open Sew	21 Learn to Quilt 10 - 12 (2 of 4)	22 Kids Club 10-12 Pillowcase 1 - 3pm	23 Bee Creative 10am, 12:30pm, 3 or 6pm	24 Kids Club 10-12	25
26	27 Kids Club 10 - 12 Open Sew	28 Learn to Quilt 10 - 12 (3 of 4)	29 Kids Club 10-12	30	31 Kids Club 10-12 Block of the Month 2 or 4pm (note date change)	Aug 1st Block of the Month @ 9:30am (note date change)



# AUGUST 2009

Get your Amazing Race Shop Hop Passports, bags and pins while supplies last...  
 Shop Hop runs Aug. 8th—15th  
 Cost is just \$5

Sun	Mon	Tue	Wed	Thu	Fri	Sat
						1 Block of the Month @ 9:30a (note date change)
2	3 Pillowcase 1 - 3 Open Sew	4 Learn to Quilt (4 of 4)	5	6	7	8 Shop Hop Begins!
9 Open Today 12 to 4	10 Open Sew	11	12	13 Appliqué Club 10:30 - 12:30	14	15 Last Day of Shop Hop
<b>Join us for the Amazing Quilt Race Shop Hop All Week! From 9 am to 6pm</b>						
16	17 Thimbleberries Club 1 - 3 Open Sew	18	19	20	21 Modge Podge Floor Quilt 11 - 4	22
23/30	24/31 Scrap Quilt Club Begins Aug 24th 3 - 5pm or 6 - 8pm Open Sew	25	26	27 Bee Creative 10am, 12:30pm, 3pm or 6pm	28	29