



Quilt Finished Size:
49" x 49"

Apron: One size fits most

Placemat: 12½" x 18½"

FABRIC REQUIREMENTS

Design	Yards
45540 SJ	1 PANEL
45541 J	¾
45541 Q	¾
45543 R	1
45543 S	⅔
45544 J	¼
45545 G (binding)	½
45545 R	¾
45542 PR (backing)	¾
Placemats (4)	Yards
45540 SJ	1 PANEL OR unused recipe cards from quilt
Main Fabric	⅝
Contrast Fabric	⅝
Backing	1
Apron	Yards
45541 Q	1
45543 S	⅝
45542 PR	⅝



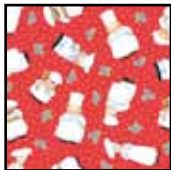
45540 SJ



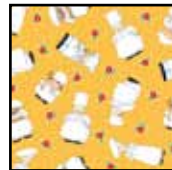
45541 J



45541 Q



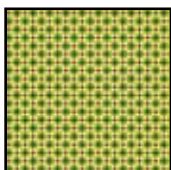
45543 R



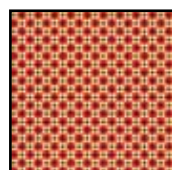
45543 S



45544 J



45545 G



45545 R



45542 PR

Quilt Designed by: Pat Harrison
Skill Level: Advanced

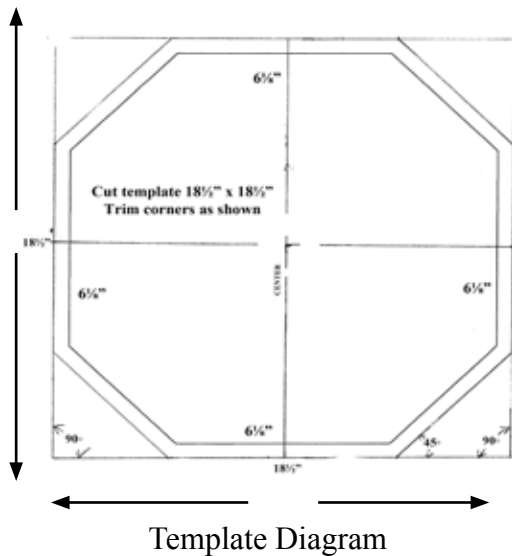
Cutting Directions:

WOF= width of fabric

It is strongly recommended fabrics be prewashed and starched before cutting.

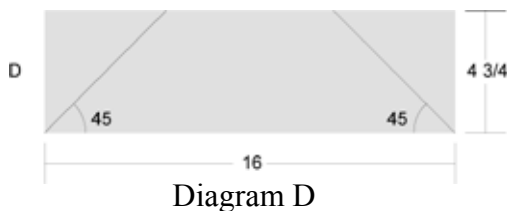
Panel 45540SJ

Fussy cut a $18\frac{1}{2}$ x $18\frac{1}{2}$ " square, centering image of girl from panel. Prepare template as shown in Template Diagram. Use template to cut the square into an octagon shape. Fussy cut four recipe cards by cutting along the black outline for each card.



Black Aprons 45541J

Cut 2 strips @ $4\frac{3}{4}$ " x WOF, sub cut 4 rectangles @ $4\frac{3}{4}$ " x 16". Trim ends of rectangles as shown in Diagram D. Cut 1 - $10\frac{1}{4}$ " x $10\frac{1}{4}$ " square, cut diagonally twice into 4 quarter square triangles .



Blue Aprons 45541Q

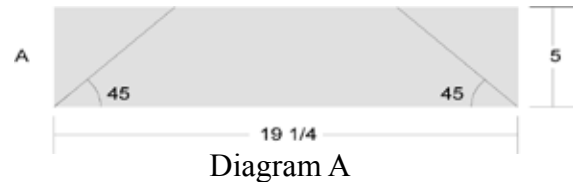
Cut 1 strip @ $9\frac{7}{8}$ " x WOF; sub cut 2 squares @ $9\frac{7}{8}$ " x $9\frac{7}{8}$ ", cut each once diagonally for a total of 4 triangles.

Red Chefs 45543R

Cut 6 strips @ $5\frac{1}{2}$ " x WOF for Border #2. Cut 2 strips @ $5\frac{1}{2}$ " x $38\frac{1}{2}$ ", Join four remaining strips, into two pairs, using diagonal seams and cut each strip @ $5\frac{1}{2}$ " x $48\frac{1}{2}$ "

Yellow Chefs 45543S

Cut 4 strips @ 5" x WOF, sub cut 8 rectangles @ 5" x $19\frac{1}{4}$ ". Trim ends of rectangles as shown below in Diagram "A"



Black Cherry 45544J

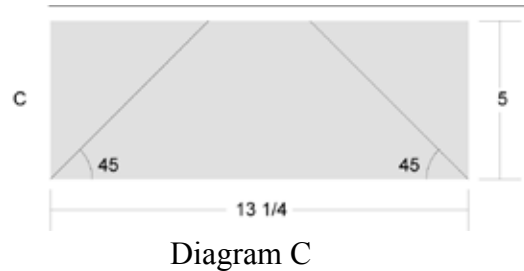
Cut 4 - $1\frac{1}{2}$ " strips WOF for Border #1. Cut 2 @ $1\frac{1}{2}$ " x $36\frac{1}{2}$ " and 2 @ $1\frac{1}{2}$ " x $38\frac{1}{2}$ "

Green Check 45545G

Cut 6 strips @ $2\frac{1}{2}$ " x WOF for binding. Join the strips using diagonal seams

Red Check 45545R

Cut 2 strips @ 5" x WOF; sub cut 4 rectangles @ 5" x $13\frac{1}{4}$ " – Trim ends of rectangles as shown in Diagram "C".



Sewing

All seams are sewn right sides together with a $\frac{1}{4}$ " seam unless noted otherwise.

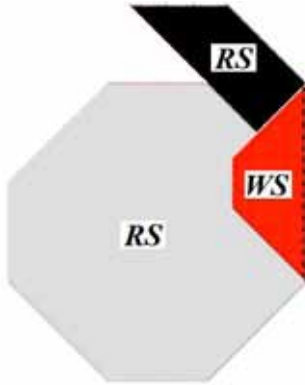
RS= right side

WS= wrong side

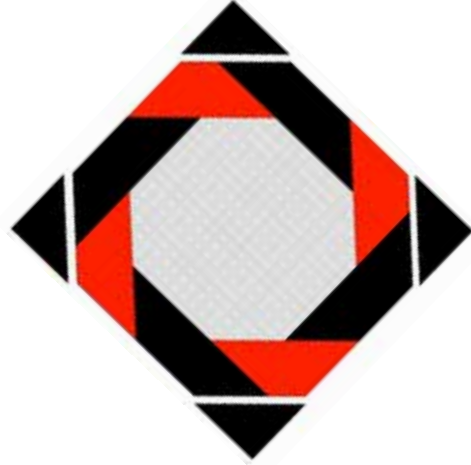
1. Sew the long side of a Black Apron $4\frac{3}{4}$ " x 16" trapezoid to one of the long sides of the center octagon. Only sew the seam part of the way as shown in the image below. Start sewing half way down the side of the octagon indicated by the arrow and continue to the edge where the two pieces meet. Press the unit flat before pressing the seam towards the Black Apron trapezoid.



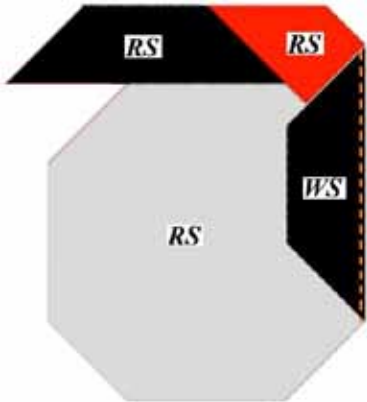
2. Sew the long side of a Red Check 5" x 13 1/4" trapezoid to the side adjoining the Black Apron trapezoid as shown below. Press the unit flat before pressing the seam towards the Red Check trapezoid.



6. Sew the long side of a Black Aprons triangle to each of the four short sides of the octagonal shaped quilt top as shown below. Press the seam towards the Black Apron triangle.



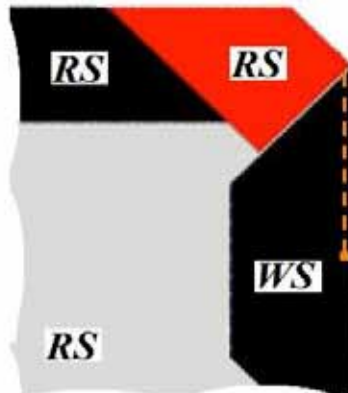
3. Sew the long side of another Black Apron 4 3/4" x 16" trapezoid to the side adjoining the Red Check trapezoid as shown below. Press the unit flat before pressing the seam towards the Black Apron trapezoid.



7. Sew two Yellow Chefs 5" x 19 1/4" trapezoids to the adjacent sides Blue Aprons triangle as shown below. Press the seams towards the Yellow Chefs trapezoids. Sew the mitered corner seam together and press the seam open. Repeat to make four triangle units.



4. Repeat steps 2 & 3 till all the Red Check and Black Apron trapezoids are sewn to the center octagon.
5. After the last Red Check trapezoid is attached to the center octagon, finish the partial seam where you started the piecing. See the image. Press the new part of the seam flat before pressing the seam towards the Black Apron trapezoid.



8. Sew each triangle unit to the side of the quilt top as shown below. Match the centers and the seams on the units. Be very careful on this step, you are sewing two bias edges together. DO NOT STRETCH THE EDGES AS YOU SEW. Press the quilt top flat before pressing the seam towards the triangle unit.



9. Sew the Black Cherry 1 ½" x 36 ½" strips to opposite sides of the quilt top. Press the seams towards the border strips. Sew the Black Cherry 1 ½" x 38 ½" strips to top and bottom of the quilt top. Press the seams towards the border strips.

10. Sew the Red Chefs 5 ½" x 38 ½" strips to opposite sides of the quilt top. Press the seams towards the border strips. Sew the Red Chefs 5 ½" x 48 ½" strips to the top and bottom of the quilt top. Press the seams towards the border strips.

11. Use your favorite technique to appliqué the recipe cards to the corners of the quilt top as shown in the finished image of the quilt.

12. Layer, quilt as desired and bind the quilt using the Green Check print.

Placemats

Cutting for four place mats WOF= width of fabric

Panel 45540SJ

Fussy cut four recipe cards @ 5 ½" x 9 ¼".

Yellow Chefs 45543S (Main Fabric)

Cut 4 strips @ 2 ¼" x WOF, sub cut 16 @ 2 ¼" x 3 ⅜" and 8 @ 2 ¼" x 9 ¼" Cut 2 strips @ 3 ⅜" x WOF, sub cut 8 @ 3 ⅜" x 5 ½"

Red Check 45545R (Contrast Fabric)

Cut 1 strip @ 2 ¼" x WOF, sub cut 16 @ 2" x 2 ¼".
 Cut 1 strip @ 2" x WOF and sub cut 8 @ 2" x 5 ½"
 Cut 4 strips @ 1 ½" x WOF, sub cut 8 @ 1 ½" x 18"
 Cut 7 strips @ 2 ¼" x WOF strips for binding

Sewing

Use a ¼" seam allowance unless noted otherwise

1. Sew a Red Check 2" x 2 ¼" rectangle to the short side of a Yellow Chefs 2 ¼" x 3 ⅜" rectangle, as shown below. Press the seam towards the Red Check. Repeat to make 4.



2. Sew 2 of these to the short sides of a Yellow Chefs 2 ¼" x 9 ¼" rectangle, as shown below. Press the seams towards the Red Check. Repeat to make 2 narrow strips. Set these aside.



3. Sew a Red Check 2" x 5 ½" rectangle to the long side of a Yellow Chefs 3 ⅜" x 5 ½" rectangle, as shown below. Press the seam towards the Red Check. Repeat to make 2.



4. Sew these to the short sides of the fussy cut 5 ½" x 9 ¼" rectangle, as shown below. Press the seams towards the Red Check. Make one center strip.



5. Sew a narrow strip to the long side of a Red Check 1 ½" x 18" strip. Press the seam towards the Red Check strip. Repeat to make 2.



6. Sew these to the long sides of the center strip. Make sure the pieces are correctly rotated. Press the seams towards the Red Check.



7. repeat steps 1-6 to make 3 more placemats.

8. Layer with batting and backing

9. Quilt as desired.

10. Sew binding strips together using diagonal seams. Sew to placemat top mitering corners. Join the ends using a diagonal seam.

11. Turn binding to back, machine or hand sew.

Reversible Apron

Blue Aprons 45541Q 1 yd
 Red Chefs 45543R 5/8 yd
 Yellow Chefs 45543S 5/8 yd

Cutting Directions: WOF= width of fabric

Blue Aprons 45541Q

Cut 3 strips @ 4" x WOF for waistband and ties.
 Cut one strip in half.
 Cut 3 strips @ 7" x WOF for ruffle

Red Chefs 45543R

Cut 1 @ 18" x 30" for body of apron

Yellow Chefs 45543S

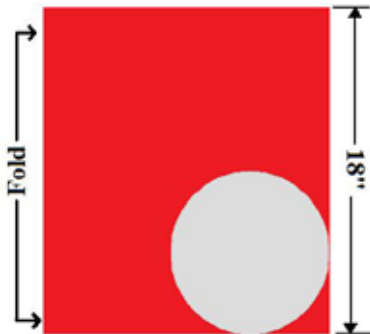
Cut 1 @ 18" x 30" for body of apron

Sewing

All seam allowances are 1/2" unless otherwise specified.

Shape the curved bottom of the body of the apron as follows:

1. Fold the 18" x 30" strip in half along the width. Using a dinner plate or other round household object, place it on one corner, aligned with the bottom and side raw edge of the fabric. Draw the curve, cut out. Repeat with second fabric panel.



Ruffle

2. Create double sided ruffle by sewing the short ends of the Blue Aprons 7" x WOF strips together at short ends into one long strip.
3. Fold right sides together lengthwise, sew end seams, trim and clip corners to reduce bulk, and turn to outside, press.

4. To gather the ruffle, sew 2 rows of basting stitches, at 1/2" and 1/4" from the raw edge, pull up threads to gather ruffle.

5. Pin ruffle to the sides and bottom edge of one of the apron panels taking care to distribute the ruffle evenly. Baste in place. Be careful not to extend the ruffle into the waistband seam allowance. Keep the ruffle at least 1" below the raw edge of the top of the apron.

6. Place the apron panels right sides together with the ruffle to the inside. Pin the curved edges and sew.

7. Turn the apron right side out, press.

8. Pin top raw edges together. Gather top edges as described in Step 4 to a final width of approximately 18", distributing gathers evenly.

Waistband and Ties

9. You will use one half of the 4" strip for the waistband. Trim strip to 4" x 19". Sew the two remaining Blue Aprons 4" x WOF strips to the each short end of the waistband. Press seams open.

10. Center the waistband strip over the gathered apron top edge, right sides together, pin and sew. Press seam toward waistband.

11. Fold the waistband strip in half lengthwise, right sides together. Pin and sew, starting at tie end on each side and stopping at the waistband. Trim seams and corners, turn right side out and press.

12. Fold under the seam allowance on the raw edge of the waistband and press. Hand or machine stitch in place.

While all possible care has been taken to ensure the accuracy of this pattern, we are not responsible for printing errors or the way in which individual work varies.